

Inspiring Great Spaces™



DIAMOND 10™ Coated Heterogeneous Vinyl Sheet

COLORWIN®



DIAMOND 10™ Coated Heterogeneous Vinyl Sheet

COLORWIN®

Sophisticated Design Meets Long-Life Performance

Inspired by the pattern of water ripple, Armstrong Colorwin performs beautifully with Diamond 10™ in demanding spaces while offering a wide selection of on-trend colors and unique patterns.

The coordination of light beige and neutral grey colors make a warm and harmonize atmosphere. It's perfect for office, healthcare and retail application.

DIAMOND 10™ TECHNOLOGY



Tough as Diamond

- Unique formulation with industrial diamond
- More compacted and tougher coating to protect the vinyl flooring



Easy to Clean

- Water/oil-based pollutants are difficult to penetrate into flooring
- More economic and quicker cleaning maintenance



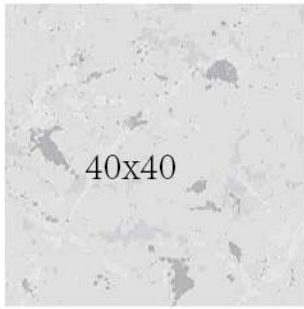
More Durable

- Superb anti-scratching capability
- Double the average coating thickness of competitors
- Excellent user experience in durability



Chemical Resistance

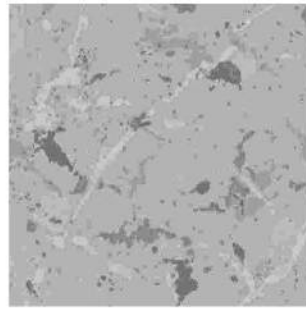
- Prevent kinds of medicament and strong acid/alkali from damage to flooring
- Tolerate to daily repeated detergent treatment



40x40

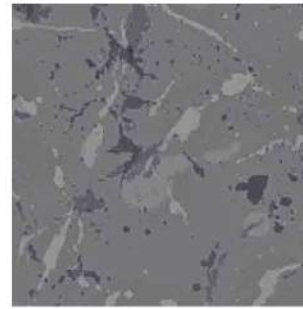
K6152-01A
W6152-01

Dawn Gray



K6152-06A
W6152-06

Wild Gray



K6152-17A
W6152-17

Dark Gray



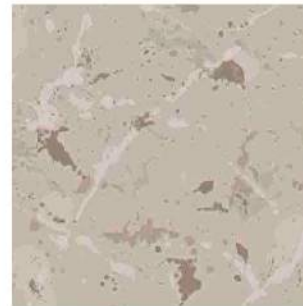
K6152-04A
W811-210

Frigid Gray



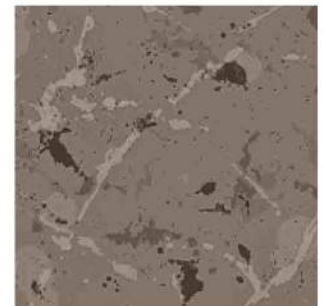
K6152-05A
W6152-05

Soyabean



K6152-10A
W6152-10

Kona



K6152-11A
W6152-11

Silicon



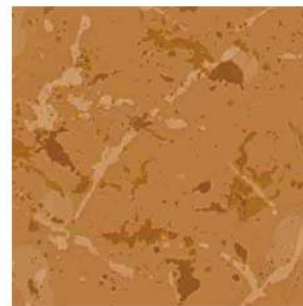
K6152-09A
W811-316

Kidney Bean



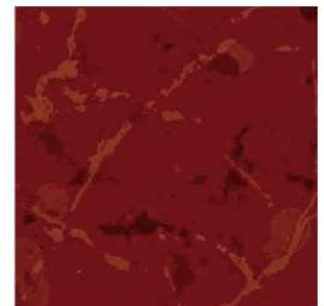
K6152-14A
W6121-05

Barley Yellow



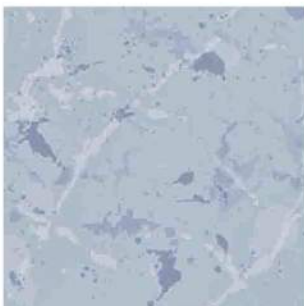
K6152-15A
W6051-15

Kumquat



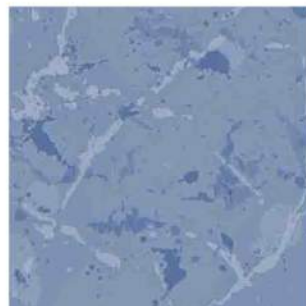
K6152-16A
W6051-16

Blaze Red



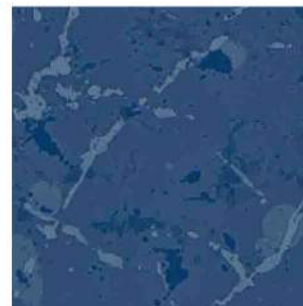
K6152-02A
W6152-02

Purple Cabbage



K6152-07A
W6152-07

Myosotis



K6152-12A
W6152-12

Kaffir Blue



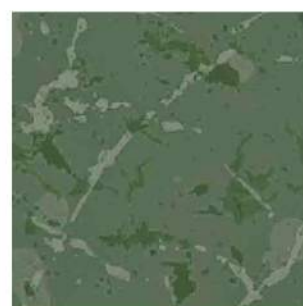
K6152-03A
W851-511

Crystal Green



K6152-08A
W6152-08

Pond Green



K6152-13A
W6152-13

Fores Green

Technical Data

Characteristics	Standard	Unit	Result
Type of flooring	ISO 10582 / EN 649		Solid Heterogeneous Vinyl Sheet
Coating			DIAMOND 10™
Pattern			Aquaria
Safety criteria			
Flammability	EN13501-1	class	B ₁ -s1
Slip resistance	EN 51130	group	R9
Dynamic coefficient of friction	EN 13893	class	DS
TVOC(after 28 days)	AgBB / DIBt	µg / m ³	< 10
Performance behaviour			
Roll dimentions	EN ISO 24341	m	2.0x15/20
Overall thickness	EN ISO 24346	mm	2.0
Thickness of wear layer	EN ISO 24340	mm	0.4
Residual indentation	EN ISO 24343-1	mm	< 0.1
Dimensional stability	EN ISO 23999	%	< 0.4
Wear resistance	EN 649	group	T
Color fastness	EN ISO 105-B01	rating	≥ 6
Castor wheel test	EN ISO 4918		No damage
Chemical resistance	EN 423		No Stain 0



Sample piece in this sample folder is only for color reference, the structure and color of which may be varied in actual product supplying

www.armstrongflooring.asia

ARMSTRONG FLOORING OFFICES:

	TEL:	FAX:
Hong Kong	(852) 2585 7000	(852) 2598 7181
Singapore	(65) 6604 6836	(65) 6604 6835
Malaysia	(60) 379 323 331	(60) 379 606 331
Indonesia	(62) 21 2965 7866	(62) 21 2965 7867

