

Inspiring Great Spaces™



DIAMOND 10™ Coated Homogeneous Sheet

SIMPURITY®



Inspiring Great Spaces™

Armstrong®
FLOORING



Tough as Diamond

- Unique formulation with industrial diamond
- More compacted and tougher coating to protect the vinyl flooring



Easy to Clean

- Water/oil-based pollutants are difficult to penetrate into flooring
- More economic and quicker cleaning maintenance



More Durable

- Superb anti-scratching capability
- Double the average coating thickness of competitors
- Excellent user experience in durability



Chemical Resistance

- Prevent kinds of medicament and strong acid/alkali from damage to flooring
- Tolerate to daily repeated detergent treatment

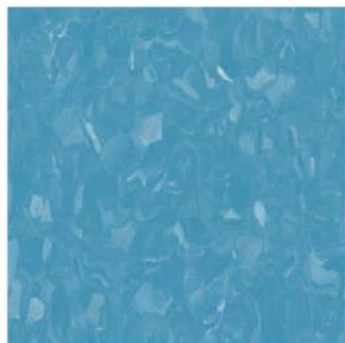


DIAMOND
10TM
TECHNOLOGY



K822A-602
W822-602

Peaceful



K822A-601
W822-601

Sea blue



K822A-502
W822-502

Soft green



K822A-501
W822-501

Green tea



K822A-101
W822-101

Light coir



K822A-201
W822-201

Khaki



K822A-001
W822-001

Gently grey



K822A-002
W822-002

Plow rock



K822A-306
W822-306

Sand yellow



K822A-307
W822-307

Bean leaf



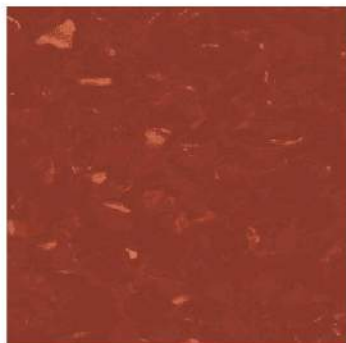
K822A-022
W822-022

Cos grey



K822A-015
W822-015

Chalk black



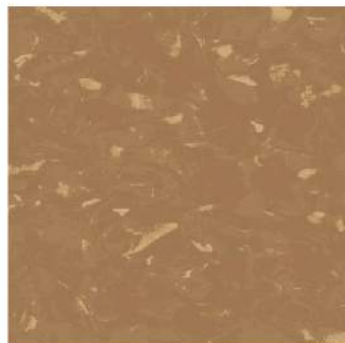
K822A-416
W822-416

Puff red



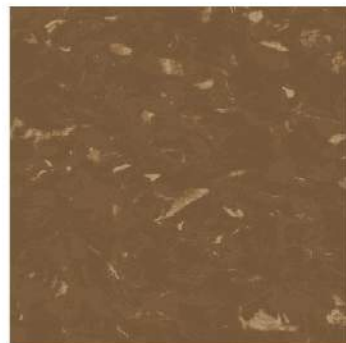
K822A-614
W822-614

Mix blue



K822A-119
W822-119

Pod sand

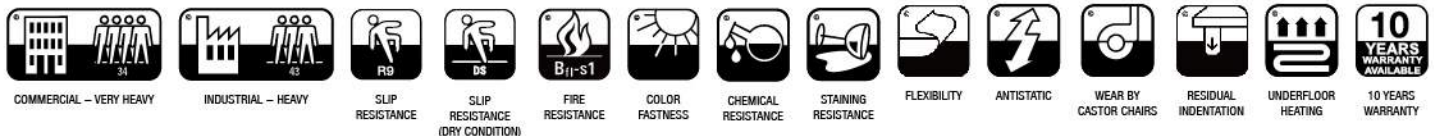


K822A-120
W822-120

Deep brown

Technical Data

Characteristics	Standard	Unit	Result
Type of floor covering			Homogeneous vinyl sheet
Material			Polyvinyl chloride
Coating			DIAMOND 10™
Safety criteria			
Flammability	EN 13501-1	class	Bfl-s1
Slip resistance	DIN 51130	group	R9
Dynamic coefficient of friction	EN 13893		DS
REACH			Contains no substances mentioned in the SHVC-list
TVOC Emissions	ISO 16000-6		≤ 5 ug/m3 after 28 days
Performance behaviour			
Roll width	ISO24341	m	2
Roll length	ISO24341	m	13 - 20
Overall thickness	ISO24346	mm	2.0
Wear layer thickness	ISO24340	mm	2.0
Product weight	ISO23997	kg/m2	3.3
Wear resistance	EN660-2	group	T
Residual indentation	ISO2434301	mm	≤ 0.04
Dimensional stability	ISO23999	%	X: < 0.4 ; Y: < 0.4
Flexibility	ISO24344		10 mm mandrel, no cracking
Seam strength	ISO16906		Mean ≥ 560N/50mm
Color fastness	ISO105-B02		> 6
Static electrical propensity	EN 1815	kV	≤ 2.0
Resistance to staining	EN 423		Good resistance
Bacteria resistance	ISO 846: Part C		No observed growth



Sample piece in this sample folder is only for color reference, the structure and color of which may be varied in actual product supplying

www.armstrongflooring.asia

ARMSTRONG FLOORING OFFICES:

	TEL:	FAX:
Hong Kong	(852) 2585 7800	(852) 2598 7181
Singapore	(65) 6604 6836	(65) 6604 6835
Malaysia	(60) 379 323 331	(60) 379 606 331
Indonesia	(62) 21 2965 7866	(62) 21 2965 7867

